

Florida Inland Port is:

- 2,675 developable acres
- 1,433 acres set aside for conservation and easements
- Readily accessible to 11 Turnpike and Interstate 95 exits
- The only inland port option with on-dock rail capability to all major FL ports
- Within 120 mile radius to 64% of Florida's consumer base and largest concentration of distribution centers

Strategic Partners



Project development advisor



Intermodal engineering



Supply chain & logistics modeling



Civil engineering



Legal services



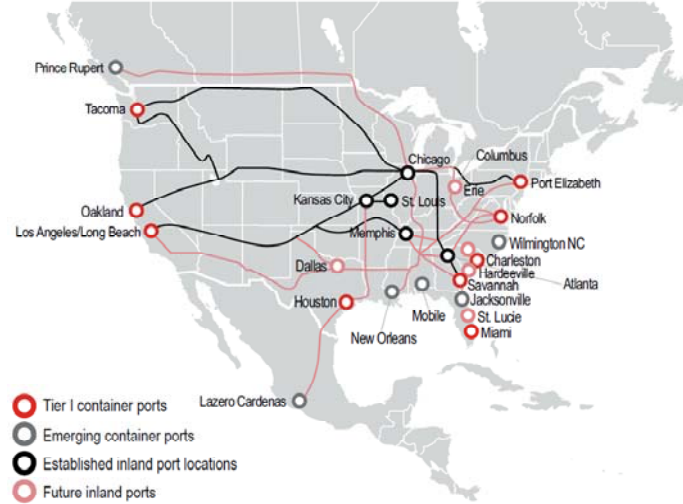
Maritime advisor

Florida Inland Port is a development partnership between:

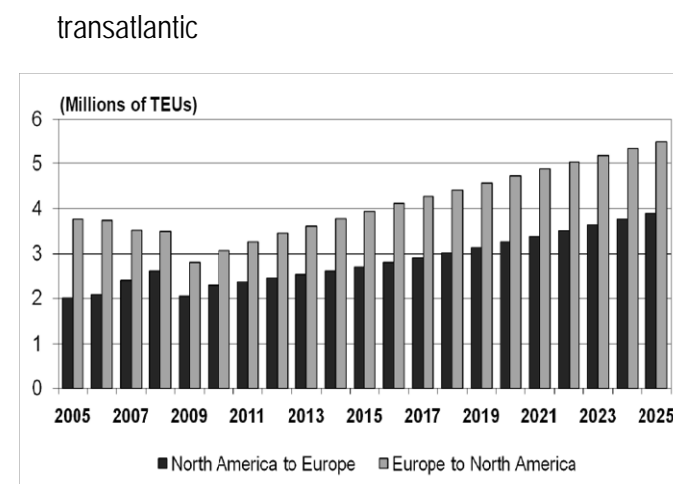
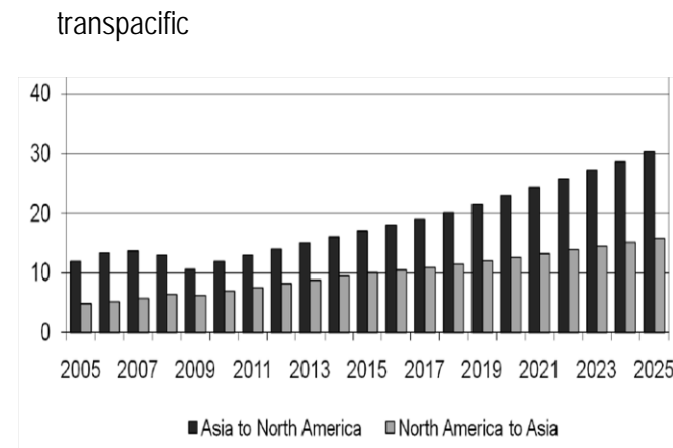
Pineloch Management Corporation

Kennedy Holdings, LLC

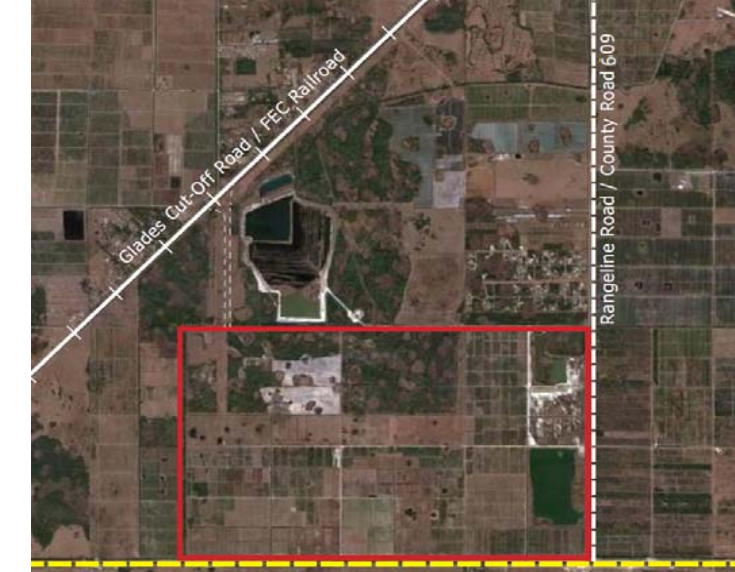
Inland port connections



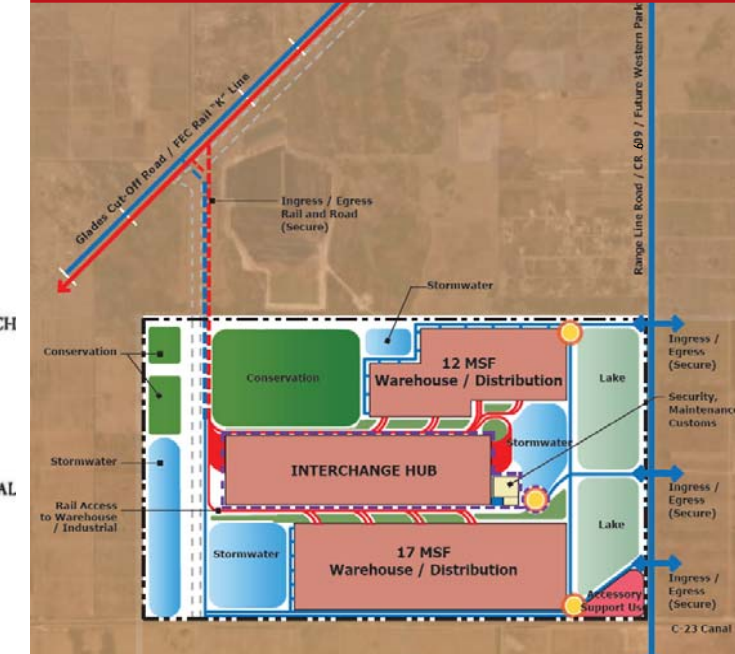
Container traffic recovery projections



Aerial photo of FIP Land Holdings



Conceptual plan of FIP Land Holdings



Florida Inland Port will:

- Allow Florida ports to more effectively compete for greater US market share
- Reduce congestion on public roadways by offering on-dock rail service to a dedicated destination
- Provide an environmentally conscious business environment for logistics, manufacturing and distribution
- Complement Florida's public infrastructure improvements through private sector investment
- Create meaningful jobs and revenues to the state economy
- Become a successful model for the future