

FOR LEASE > RETAIL OUTPARCEL

# Southgate Build to Suit Opportunity



Central Florida

Orange Ave & Southgate Blvd, Orlando FL 32806



## Southgate Outparcel > Features

Southgate is a prime location on a major artery to Downtown Orlando. Great visibility and access to Orange Avenue. A total of 130 feet on Orange Avenue.

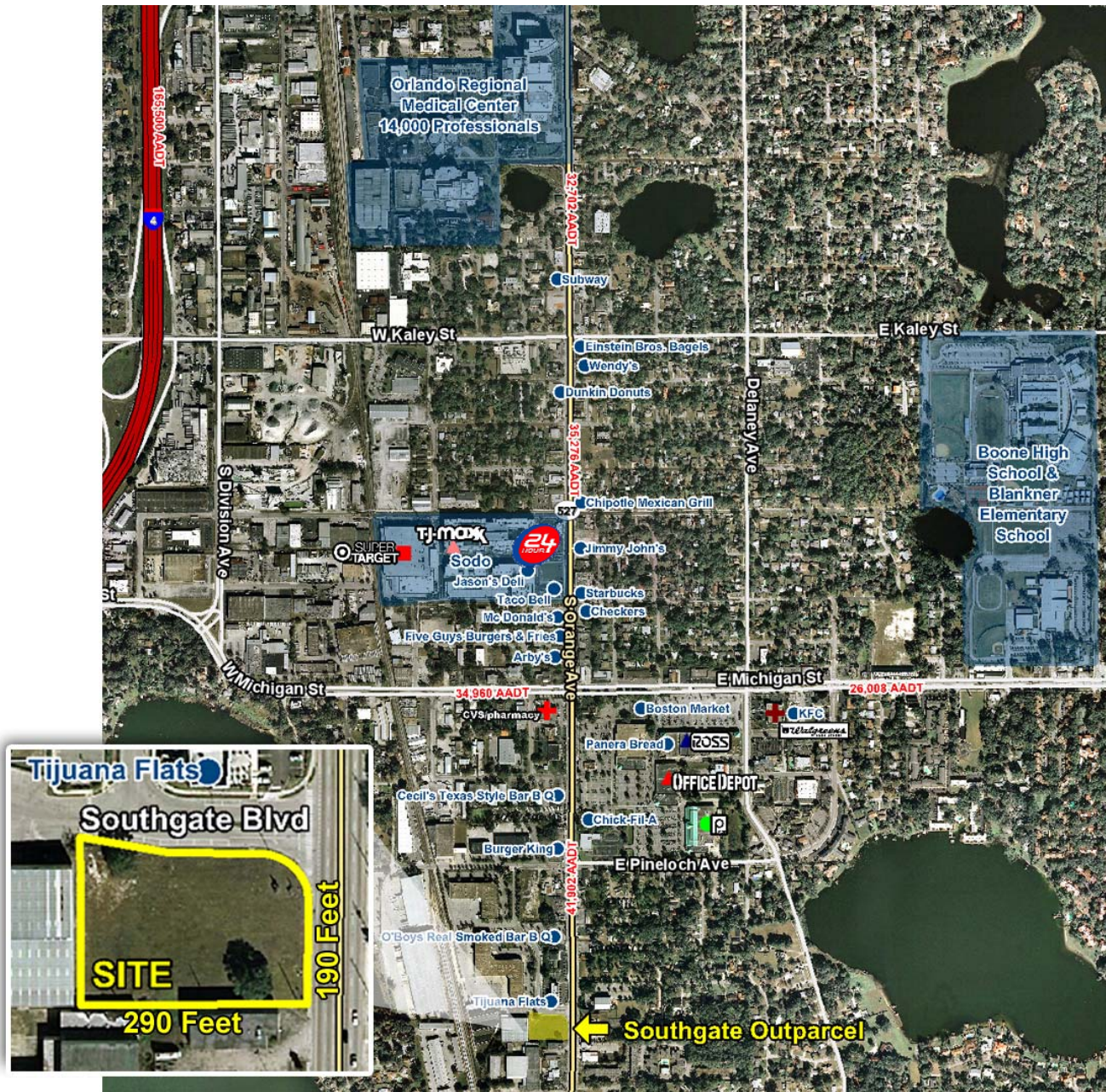
- ±1.0 Acre outparcel fronting Orange Ave
- Zoned PD
- Pad-ready
- Utilities stubbed to site
- Off-site retention

2010 Demographics	1 Mile	3 Miles	5 Miles
Population	9,550	119,997	287,299
Population Growth	37.1%	32.1%	11.6%
Median Household Income	\$44,249	\$61,582	\$50,869
Average household Income	\$75,709	\$63,763	\$69,225
Daytime Population	9,340	117,568	284,183

**JORGE RODRIGUEZ, CCIM**  
Director of Retail Services  
+1 407 362 6141  
jorge.rodriquez@colliers.com

**COLLIERS INTERNATIONAL**  
622 E. Washington Street  
Suite 300  
Orlando, FL 32801  
www.colliers.com

# Southgate ±1.0 Acre Outparcel



## Contact Us

**JORGE RODRIGUEZ, CCIM**  
 Director of Retail Services  
 +1 407 362 6141  
[jorge.rodriquez@colliers.com](mailto:jorge.rodriquez@colliers.com)

Locally Leased & Managed By:



**COLLIERS INTERNATIONAL  
 CENTRAL FLORIDA**

622 E. Washington Street  
 Suite 300  
 Orlando, FL 32801

[www.colliers.com](http://www.colliers.com)

This document has been prepared by Colliers International Central Florida for advertising and general information only. Colliers International Central Florida makes no guarantees, representations or warranties of any kind, expressed or implied, regarding the information including, but not limited to, warranties of content, accuracy and reliability. Any interested party should undertake their own inquiries as to the accuracy of the information. Colliers International Central Florida excludes unequivocally all inferred or implied terms, conditions and warranties arising out of this document and excludes all liability for loss and damages arising there from. This publication is the copyrighted property of Colliers International and/or its licensor(s). © 2010. All rights reserved.



Central Florida